

In accepting and utilising this document the recipient agrees that SJB Architecture (NSW) Pty. Ltd. ACN 081 094 724 T/A SJB Architects, retain all common law, statutory law and other rights including copyright and intellectual property rights. The recipient agrees not to use this document for any purpose other than its intended use; to waive all claims against SJB Architects resulting from unauthorised changes, or to reuse the document on other projects without the prior written consent of SJB Architects. Under no circumstances shall transfer of this document be deemed a sale. SJB Architects makes no warranties of fitness for any purpose. The Builder/Contractor shall verify job dimensions prior to any work commencing. Use figured dimensions only. Do not scale drawings.

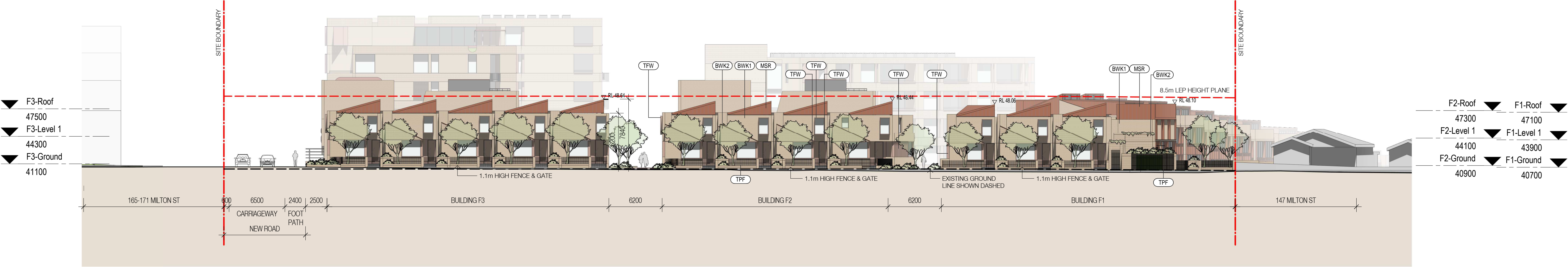
Nominated Architects: Adam Haddow-7188 | John Pradel-7004

FOR APPROVAL

Rev	Date	Revision	By	Chk.
1	05.05.2020	Preliminary - DA Set 20%	JS	WG
2	19.05.2020	Preliminary - DA Set 40%	JS	WG
3	21.07.2020	For Coordination	JS	WG
4	28.07.2020	For Coordination	JS	WG
5	27.08.2020	For DA	JS	WG



North



East (Milton Street)

Planning & Heritage
Urbs
Landscape Architect
Arcadia Landscape Architecture
BCA
Building Certificates Australia
Services, Hydraulic & BASIX
Integrated Group Services
Civil & Geotech
EI Australia
Traffic
Ason Group
Waste Management
Elephant's Foot Waste Compactors
Arborist
Naturally Trees
Access Consultant
Vista Access Architects

Client

Ashbury FMBM Pty Ltd

Project

Milton Street

149-163 Milton Street
Ashbury NSW
2193

Drawing Name

Elevations - North & East

Date	Scale	Sheet Size
27.08.2020	1 : 250	@ A1

Drawn	Chk.
JS	WG

Job No.	Drawing No.	Revision
6119	DA-0501	/ 5

Materials Legend

AFW	Aluminium Framed Window
AFN	Aluminium Fin
BWK	Face Brickwork
	(1) Stretcher Course
	(2) Soldier Course
	(3) Stack Course
MB	Metal Balustrade
MSR	Metal Sheet Roof
RC	Concrete Structure
SIL	Concrete Sill + Handrail
TFW	Timber Framed Window/Door
TPF	Timber Palisade Fence/Gate

SJB Architects
Level 2
490 Crown Street
Surry Hills NSW
2010 Australia
T 61 2 9380 9911
F 61 2 9380 9922
www.sjb.com.au

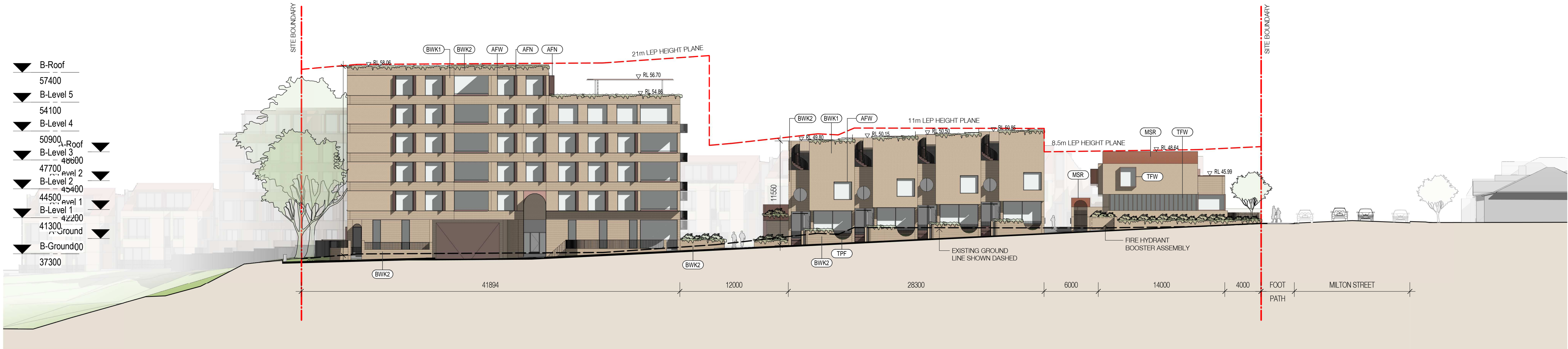


In accepting and utilising this document the recipient agrees that SJB Architecture (NSW) Pty. Ltd. ACN 081 094 724 T/A SJB Architects, retain all common law, statutory law and other rights including copyright and intellectual property rights. The recipient agrees not to use this document for any purpose other than its intended use; to waive all claims against SJB Architects resulting from unauthorised changes, or to reuse the document on other projects without the prior written consent of SJB Architects. Under no circumstances shall transfer of this document be deemed a sale. SJB Architects makes no warranties of fitness for any purpose. The Builder/Contractor shall verify job dimensions prior to any work commencing. Use figured dimensions only. Do not scale drawings.

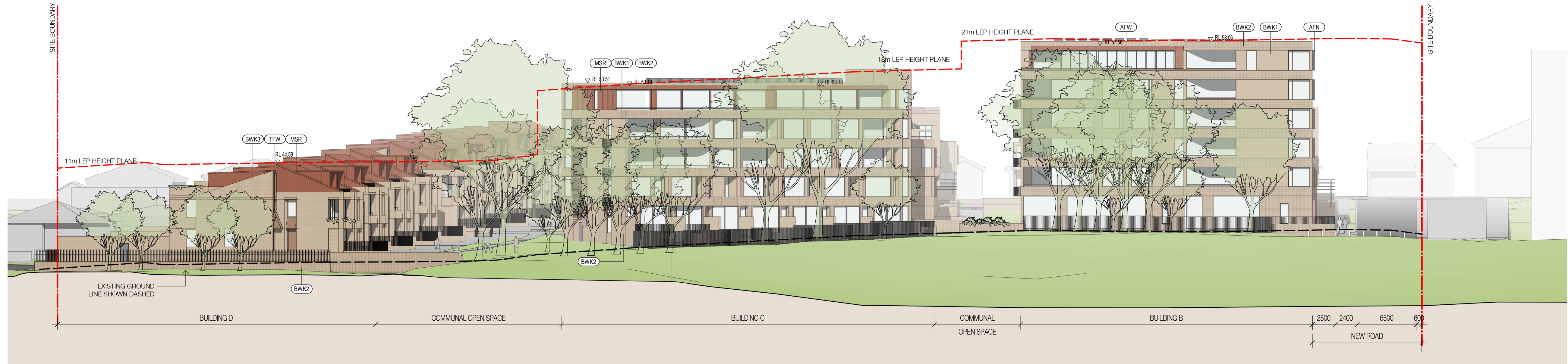
Nominated Architects: Adam Haddow-7188 | John Pradel-7004

FOR APPROVAL

Rev	Date	Revision	By	Chk.
1	05.05.2020	Preliminary - DA Set 20%	JS	WG
2	18.05.2020	Preliminary - DA Set 40%	JS	WG
3	21.07.2020	For Coordination	JS	WG
4	28.07.2020	For Coordination	JS	WG
5	27.08.2020	For DA	JS	WG



South (New Street)



West

Planning & Heritage

Urbis

Landscape Architect

Arcadia Landscape Architecture

BCA

Building Certificates Australia

Services, Hydraulic & BASIX

Integrated Group Services

Civil & Geotech

EI Australia

Traffic

Ason Group

Waste Management

Elephant's Foot Waste Compactors

Arborist

Naturally Trees

Access Consultant

Vista Access Architects

Client

Ashbury FMBM Pty Ltd

Project

Milton Street

149-163 Milton Street
Ashbury NSW
2193

Drawing Name

Elevations - South & West

Date	Scale	Sheet Size
27.08.2020	1 : 250	@ A1

Drawn	Chk.
JS	WG

Job No.	Drawing No.	Revision
6119	DA-0502	/ 5

SJB Architects
Level 2
490 Crown Street
Surry Hills NSW
2010 Australia
F 61 2 9380 9911
www.sjb.com.au



Materials Legend

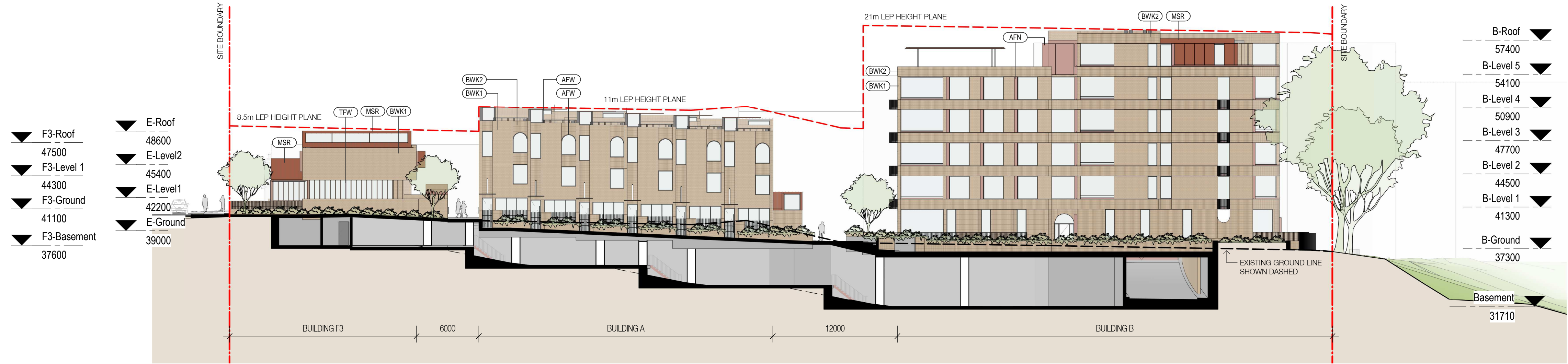
AFW	Aluminium Framed Window
AFN	Aluminium Fin
BWK	Face Brickwork
	(1) Stretcher Course
	(2) Soldier Course
	(3) Stack Course
MB	Metal Balustrade
MSR	Metal Sheet Roof
RC	Concrete Structure
SIL	Concrete Sill + Handrail
TFW	Timber Framed Window/Door
TPF	Timber Palisade Fence/Gate

In accepting and utilising this document the recipient agrees that SJB Architecture (NSW) Pty. Ltd. ACN 081 094 724 T/A SJB Architects, retain all common law, statutory law and other rights including copyright and intellectual property rights. The recipient agrees not to use this document for any purpose other than its intended use; to waive all claims against SJB Architects resulting from unauthorised changes; or to reuse the document on other projects without the prior written consent of SJB Architects. Under no circumstances shall transfer of this document be deemed a sale. SJB Architects makes no warranties of fitness for any purpose. The Builder/Contractor shall verify job dimensions prior to any work commencing. Use figured dimensions only. Do not scale drawings.

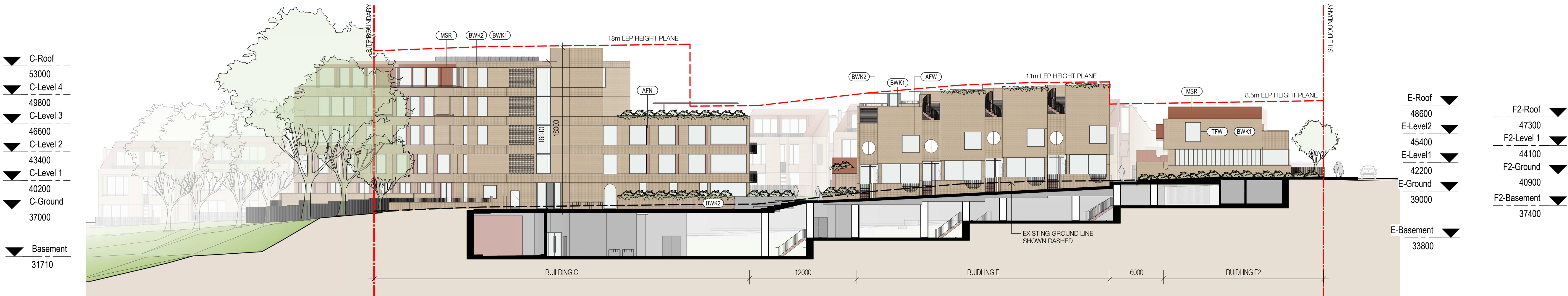
Nominated Architects: Adam Haddow-7188 | John Pradel-7004

FOR APPROVAL

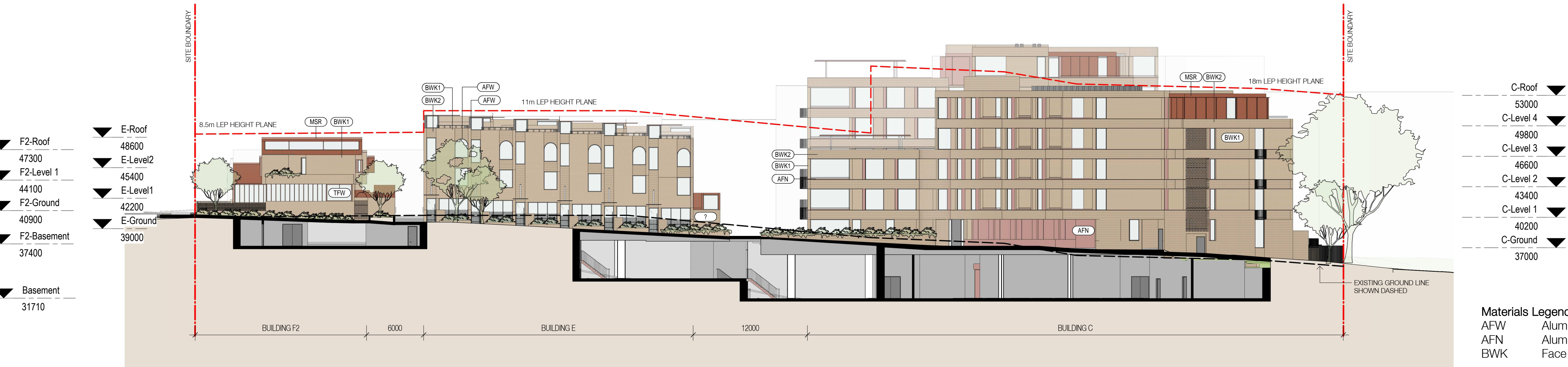
Rev	Date	Revision	By	Chk.
1	05.05.2020	Preliminary - DA Set 20%	JS	WG
2	19.05.2020	Preliminary - DA Set 40%	JS	WG
3	21.07.2020	For Coordination	JS	WG
4	28.07.2020	For Coordination	JS	WG
5	27.08.2020	For DA	JS	WG



Building A, B & F3 North



Building C, E & F2 South



Building C, E & F2 North

Materials Legend

AFW	Aluminium Framed Window
AFN	Aluminium Fin
BWK	Face Brickwork
	(1) Stretcher Course
	(2) Soldier Course
	(3) Stack Course
MB	Metal Balustrade
MSR	Metal Sheet Roof
RC	Concrete Structure
SIL	Concrete Sill + Handrail
TFW	Timber Framed Window/Door
TPF	Timber Palisade Fence/Gate

SJB Architects
Level 2
490 Crown Street
Surry Hills NSW
2010 Australia
T 61 2 9380 9911
F 61 2 9380 9922
www.sjb.com.au



Planning & Heritage
Urbis
Landscape Architect
Arcadia Landscape Architecture
BCA
Building Certificates Australia
Services, Hydraulic & BASIX
Integrated Group Services
Civil & Geotech
EI Australia
Traffic
Ason Group
Waste Management
Elephant's Foot Waste Compactors
Arborist
Naturally Trees
Access Consultant
Vista Access Architects
Client

Ashbury FMBM Pty Ltd

Project
Milton Street
149-163 Milton Street
Ashbury NSW
2193

Drawing Name
Elevations - Internal Sheet 1

Date
27.08.2020

Scale
1 : 250

Sheet Size
@ A1

Drawn
JS

Chk.
WG

Job No.
6119

Drawing No.
DA-0503

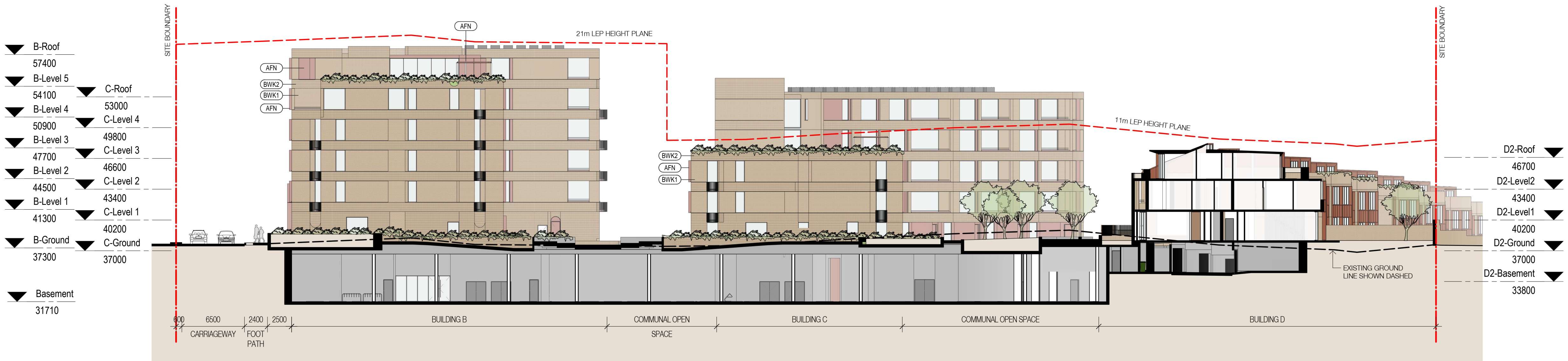
Revision
/ 5

In accepting and utilising this document the recipient agrees that SJB Architecture (NSW) Pty. Ltd. ACN 081 094 724 T/A SJB Architects, retain all common law, statutory law and other rights including copyright and intellectual property rights. The recipient agrees not to use this document for any purpose other than its intended use; to waive all claims against SJB Architects resulting from unauthorised changes, or to reuse the document on other projects without the prior written consent of SJB Architects. Under no circumstances shall transfer of this document be deemed a sale. SJB Architects makes no warranties of fitness for any purpose. The Builder/Contractor shall verify job dimensions prior to any work commencing. Use figured dimensions only. Do not scale drawings.

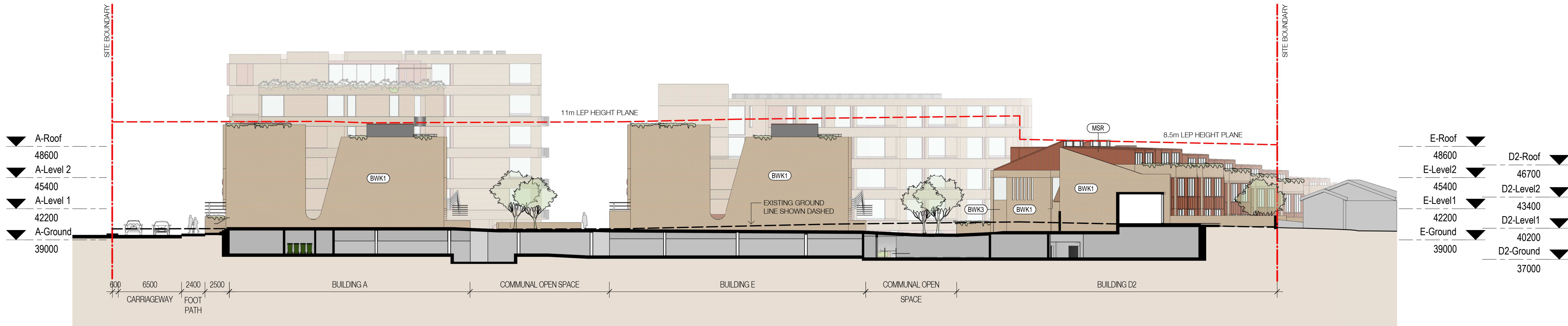
Nominated Architects: Adam Haddow-7188 | John Pradel-7004

FOR APPROVAL

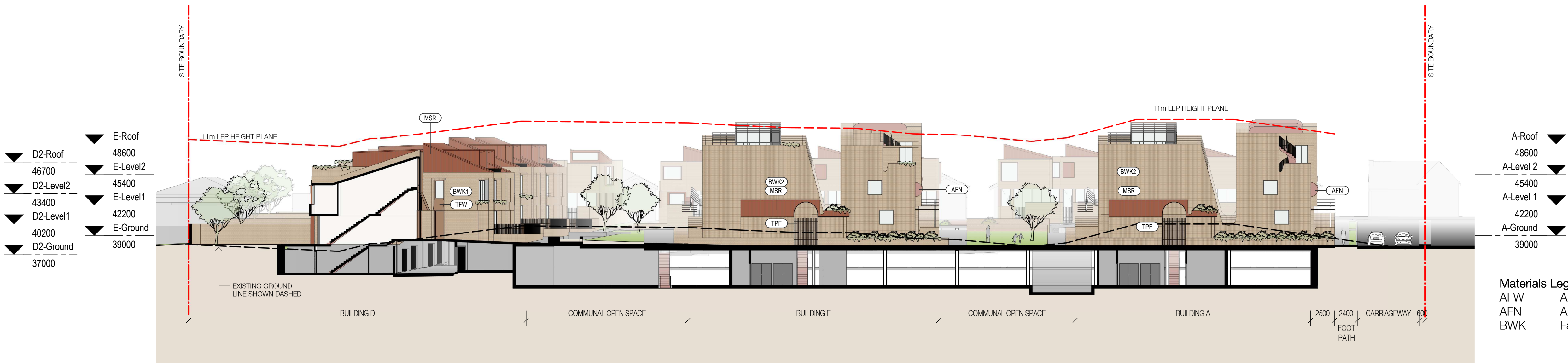
Rev	Date	Revision	By	Chk.
1	21.07.2020	For Coordination	JS	WG
2	28.07.2020	For Coordination	JS	WG
3	27.08.2020	For DA	JS	WG



Building B & C East



Building A & E East



Building A & E West

Materials Legend

AFW	Aluminium Framed Window
AFN	Aluminium Fin
BWK	Face Brickwork
	(1) Stretcher Course
	(2) Soldier Course
	(3) Stack Course
MB	Metal Balustrade
MSR	Metal Sheet Roof
RC	Concrete Structure
SIL	Concrete Sill + Handrail
TFW	Timber Framed Window/Door
TPF	Timber Palisade Fence/Gate

Planning & Heritage
Urbis
Landscape Architect
Arcadia Landscape Architecture
BCA
Building Certificates Australia
Services, Hydraulic & BASIX
Integrated Group Services
Civil & Geotech
EI Australia
Traffic
Ason Group
Waste Management
Elephant's Foot Waste Compactors
Arborist
Naturally Trees
Access Consultant
Vista Access Architects
Client

Ashbury FMBM Pty Ltd

Project
Milton Street
149-163 Milton Street
Ashbury NSW
2193

Drawing Name
Elevations - Internal Sheet 2

Date	Scale	Sheet Size
27.08.2020	1 : 250	@ A1

Drawn	Chk.
JS	WG

Job No.	Drawing No.	Revision
6119	DA-0504	/ 3

SJB Architects
Level 2
490 Crown Street
Surry Hills NSW
2010 Australia
T 61 2 9380 9911
F 61 2 9380 9922
www.sjb.com.au



Nominated Architects: Adam Haddow-7188 | John Pradel-7004

Rev	Date	Revision	By	Chk.
1	21.07.2020	For Coordination	JS	WG
2	28.07.2020	For Coordination	JS	WG
3	27.08.2020	For DA	JS	WG



Ashbury FMBM Pty Ltd

Drawing Name

Elevations - Internal Sheet 3

Drawn	Chk.
JS	WG

SJB Architects
Level 2
490 Crown Street
Surry Hills NSW
2010 Australia
T 61 2 9380 9911
F 61 2 9380 9922
www.sjb.com.au



Materials Legend	
AFW	Aluminium Framed Window
AFN	Aluminium Fin
BWK	Face Brickwork
	(1) Stretcher Course
	(2) Soldier Course
	(3) Stack Course
MB	Metal Balustrade
MSR	Metal Sheet Roof
RC	Concrete Structure
SIL	Concrete Sill + Handrail
TFW	Timber Framed Window/Door
TPF	Timber Palisade Fence/Gate